

XEDU, A PROPOSAL OF LEARNING MANAGEMENT SYSTEM IMPLEMENTATION

F. Buendia, M. Agustí, J.V. Benlloch
Departamento de Informática de Sistemas
Univ. Politécnica de Valencia
Spain
{f buendia, magusti, jbenlloc}@disca.upv.es

E. Bisbal, M. Lluésma
Facultad de Informática
Univ. Politécnica de Valencia
Spain
{embisas, mlluesma}@inf.upv.es

Abstract – Learning management systems (LMS) can be defined as “a suite of services designed to deliver, track, report on and administer learning content, student progress and student interactions”. Current LMS are based on courseware tools which mainly use Internet and the Web as learning platforms. However, they use proprietary/closed technologies and formats such as HTML that are not adequate for developing and managing sophisticated educational applications. Moreover, they also lack adaptive features in order to allow an individualised learning. The current work proposes a LMS based on standard and open Web technologies such as XML, Java and Javascript. It also includes features to adapt the delivery of educational contents depending on specific user profiles. An implementation called XEDU is being developed which runs on Apache Web Server and MySQL database.

I. INTRODUCTION

Learning management systems (LMS) can be defined as “a suite of services designed to deliver, track, report on and administer learning content, student progress and student interactions” [1]. The importance of these systems is growing as far as terms such as “Internet-based Educational Systems”, “Educational Service Providers”, “Distance-learning “ or “On-demand Education” are becoming popular. Information and communication technologies (ICT) such as Internet and the Web provide an ideal framework for current IMS. They are mostly based on courseware tools either commercial or coming from university research groups.

Some of them use proprietary multimedia authoring tools like Authorware™ or Toolbook™ that bound the reuse and exchange of educational contents [2]. In other cases, they are based on formats such as HTML that seem adequate for presenting and accessing information in a open environment like the Web but lack a data structuring capability. Moreover, they also lack adaptive features such as navigation support or presentation control mechanisms.

The current work proposes a LMS which is based on standard and open Web technologies such as XML, Java and Javascript. XML (eXtensible Markup Language) [3] is a language which describes a class of objects called XML documents. These documents have been used to represent multiple kinds of information and their application is particularly important in educational contexts [4]. An important contribution in the current work consists of specifying most of LMS information items in XML-based notations. There are also related technologies such as XSL, Xpath or Xpointer that support the management of XML documents. They are used to process LMS information and to display it in different formats and platforms.

Technologies as Java and Javascript are also applied to more complex XML processing services and they also improve the portability of such LMS. The main issues of the proposed LMS are:

- Strict detachment between authoring procedures and material formats, and their delivery. That means that the same course material could be exported to different "Course Delivery Systems".
- Use of open formats to define every kind of document from user input data to student tracking and scheduling information. Therefore, these documents should be able to be processed by means of external tools.
- Adaptation of navigation and presentation issues according to user preferences, learning goals or knowledge levels.
- Integration with several communication tools (e-mail, search engines, forum, news).

The implementation of these LMS requirements is called XEDU [5] and it runs on Apache Web Server [6]. Related server technologies such as PHP and Cocoon are also involved in its development. It is not a "professional" free-error product but it is being applied in a local project [7] and a Socrates European project called Theiere [8] in order to experiment the use of XML-based notations in learning environments.

The remainder of the paper is structured as follows. Next section describes some related work about LMS. Third section presents the proposed model of LMS. Implementation details are reported on section 4. Finally, section 5 presents some remarking conclusions.

II. RELATED WORKS

There are several proposals of “open and flexible” LMS in the sense they have features such as the use of non-proprietary formats, the distributed access and choice of the learning time/place or the personalization of teaching material for individual users. We are particularly interested into the organization of the teaching material (not only courses) and the facilities to manage it irrespective of the delivery medium.

Commercial products such as TopClass [9], WebCT [10], or Learning Space [11] permit the use of open and non-proprietary formats of the Web like HTML and they are involved in the introduction of metadata standards [12]. Current Learning Space version is AICC compliant [13] and it can interface directly with any course that has been written to AICC standards to provide AICC tracking and management functionality. WebCT provides tools such as

IMS Content Migration Utility which allows administrators to bring in or export content and assessment information from WebCT courses in IMS [14] ContentPackaging and IMS Question & Test Interoperability format. Authorware 6 includes the SCO Meta-data Editor, which is based on the IEEE LOM [15], IMS Meta-data and ADL SCORM Content-level. However, these proposals mainly aim at using these metadata standards as mechanisms to improve the interoperability with their courseware products and they bound the information to be managed in these open formats. Moreover, most of the commercial proposals rely on HTML links (or sequences of Web pages) to organize the course material and this hardens the way to manage such information.

Other options have developed more advanced “open” features and not bounded to courseware issues. For instance, Microcosm [16] provides a link service to connect multiple distributed learning applications, or Gentle [17] (now ELS) that is based on the Hyperwave server which permits the organization of documents into clusters and collections, and the management of links as independent entities. ADL [1] proposes a Shareable Content Object Reference Model (SCORM) which defines a Web-based learning "Content Aggregation Model" and "Run-time Environment" for learning objects. It combines elements of IEEE, AICC and IMS specifications and expands them to include additional course structure capabilities. The Open University of the Netherlands proposes the use of EML [18] (Education Modeling Language) to codify units of study (e.g. courses, course components and study programs) in an integral fashion. It has an XML binding and an Edubox-player has been built that interprets EML files and creates a concrete learning environment. Our work is close to this proposal in the sense that we rely on a XML-based notation to represent every kind of learning information but we intend to cope with a wider range of learning structures [20] rather than strict EML "units of study".

III. LMS MODEL

The XEDU LMS is based on a model whose main services are described as follows:

Resource Authoring

This service addresses all the aspects related to the authoring of educational resources (see Figure 1). Such resources are defined as every information item that is used for education purposes. They are divided in two types: contents and structures. Contents represent the own data associated to the educational resources (based on multimedia formats, meta-data information's or binary programs) while structures concern their organization (in form of lists, kind or part taxonomies, or algorithms) [20]. It is important to remark that courses are only a type of organization and they are managed such as any other structure.

There are several possibilities to represent contents and structures, for instance using “learning objects” and “packaging structures”[14], “units of study” [18] or “elements” and “templates” [19]. The current LMS functionality is independent from the particular resource

implementations. At this moment, we are using LMML contents [21] and own structures [22]. These elements are developed outside the system and the LMS only provides procedures to make them accessible.

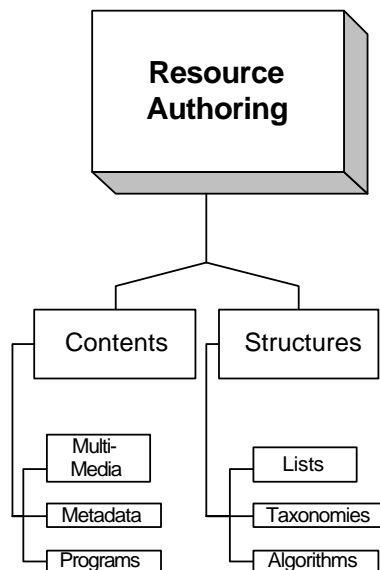


Figure 1.- Resource Authoring services.

Resource Publishing

The publishing of educational resources depends on the selected structure (e.g. a course), the system configuration and the user characteristics (see Figure 2). Each structure has assigned a specific presentation schema and a set of navigational tools. These structure schema are tailored using a system configuration in which display parameters are set up (e.g. text fonts, screen background or frames assigned to each structure component).

The presentation aspects can also be dynamically adapted depending on the user preferences, conditions or status. The navigational aspects such as the selection of links or their direction can be also adapted.

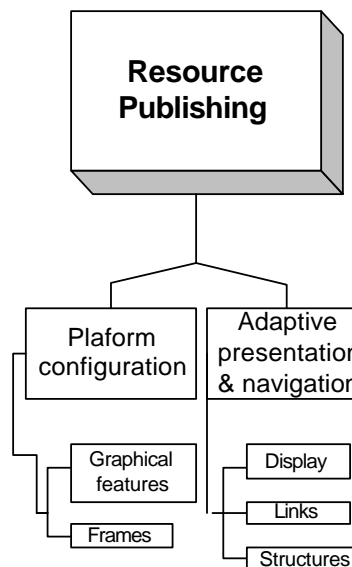


Figure 2.- Resource Publishing services.

User management

In this section, the services for managing the information about the user are described (see Figure 3). This information comes from documents that contain personal data [22] or the user knowledge about a given topic. Users can also introduce their preferences.

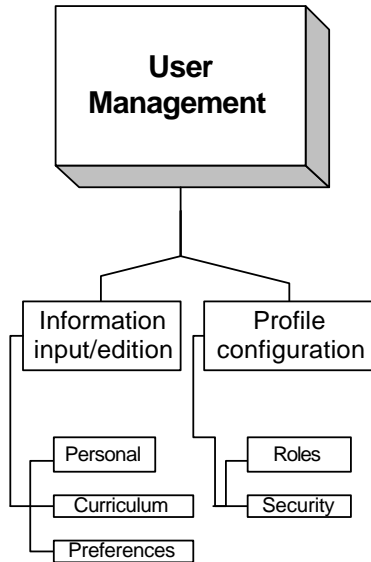


Figure 3.- User Management services.

Course/data administration

These services are addressed to organize the aspects around a course, from the selection of the structures and contents to be taught to the tracking of the user accesses (see Figure 4). They also involve the enrollment of users in a given course, the checking of prerequisites, its temporal scheduling or the setup of evaluation procedures. Finally, course certifications are produced and analysis of system and user performance can be made.

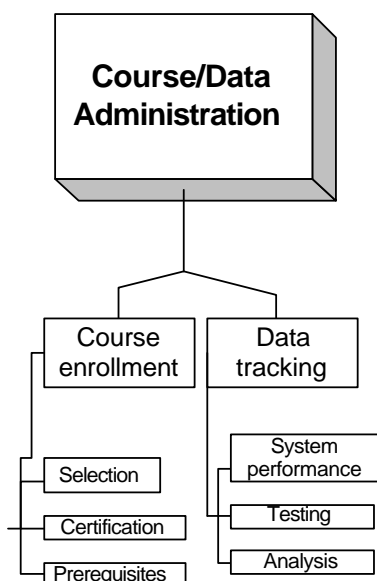


Figure 4.- Course/Data Administration services.

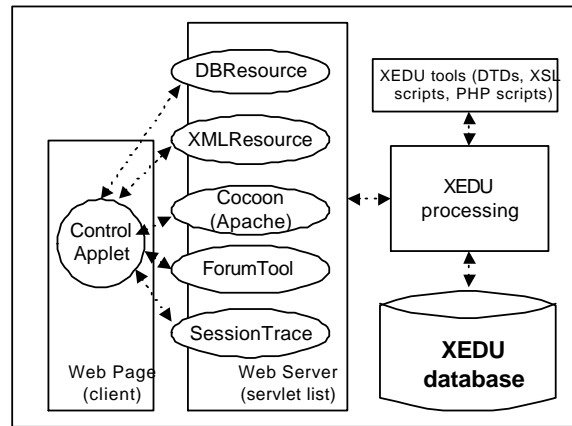


Figure 5. - XEDU implementation.

IV. LMS IMPLEMENTATION

The implementation of the previous services is performed in the context of the XEDU framework [24]. XEDU is being developed and its general structure is shown in Figure 5.

The main system is a Web application that runs on an Apache Web Server and it uses a MySQL database. This application is formed by several Java servlets which process the XEDU information elements and a "Control" applet which calls for them. The "DBResource" servlet is addressed to manage the information related to educational infrastructure and stored in the database either for teachers or students. It is invoked when the required data are in a database format and they are converted to a DOM model which is transferred to the calling applet. There is another servlet ("XMLResource") that reads the information coming from XML documents (e.g. administrative procedures) and obtains the equivalent DOM model. The Cocoon servlet [6] is also applied to perform resource management since it allows the teacher to build its own educational structure for a given topic. There is available a starting empty XML template and he can introduce, by means of XSL scripts, a component hierarchy for this topic (see Figure 6). Such hierarchy is used like the content repository and its component can be organized in different ways according to the student requirements.

```
<?xml version="1.0" encoding="UTF-8"?>
<!DOCTYPE MENU SYSTEM "Menu.dtd">
<MENU>
  <OPTION id=":0" title="Presentación" url="htmlFiles/SMM/datosSMM.php"/>
  <OPTION id=":1" title="Trabajo" url="htmlFiles/SMM/Trabajo/form_trabajo.php"/>
  <OPTION title="Prácticas" url="" id=":5">
    <OPTION title="Práctica XML (castellano)" url="htmlFiles/PFC1A/PracticaXML/login.php" id=":6"/>
    <OPTION title="Práctica XML (PDF)" url="htmlFiles/SMM/PracticaXML/PracticaXML.pdf" id=":7"/>
    <OPTION title="Práctica XML (english)" url="htmlFiles/PFC1A/PracticaXML/login.php" id=":8"/>
  </OPTION>
</MENU>
```

Figure 6.- Topic structure example.

The "ForumTool" servlet deals with the management of the different communication forums in which a specific user is involved. They are implemented as XML documents and their management is similar to the other educational resources. Figure 7 shows an example of forum display.

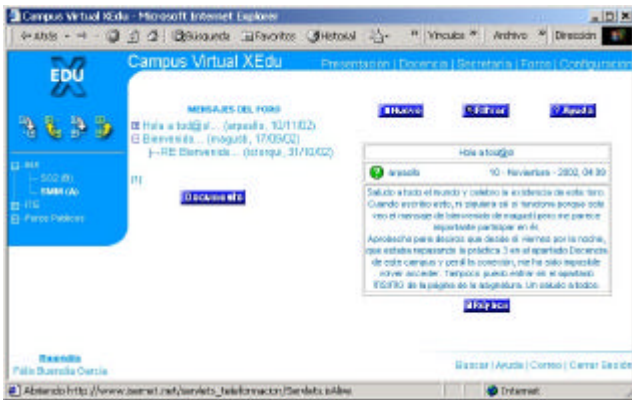


Figure 7.- Forum management in Xedu.

The "SessionTrace" servlet is addressed to store the session information that a user tracks. Figure 8 shows an XML document which gathers the session date, the interval of time and the accesses to the resource items.

```
<?xml version="1.0" encoding="UTF-8"?>
<!DOCTYPE log SYSTEM "log.dtd" >
<log>
  <session date="18/11/2001">
    <time start="9:42:14" end="9:42:57"/>
    <trace step="AC2D:8"/>
    <trace step="AC2D:1"/>
  </session>
  <session date="20/11/2001">
    <time start="9:56:14" end="9:57:11"/>
    <trace step="AC2D:1"/>
  </session>
</log>
```

Figure 8.- Trace information example in Xedu.

The resource publishing is based on the "Control" applet which configures the Web pages accessed by the users. They are divided into several areas or frames as Figure 9 shows. There is an upper frame that gathers the title and a set of general options such as Presentation, Classroom, Administration and Communication. The lower frame stores utilities such as Search, E-mail or Help. When the user clicks on a option like Classroom, the left frame is assigned with an index map attached to the material structure. The main frame is used to show the content information (e.g. the content of a practice activity about XML).

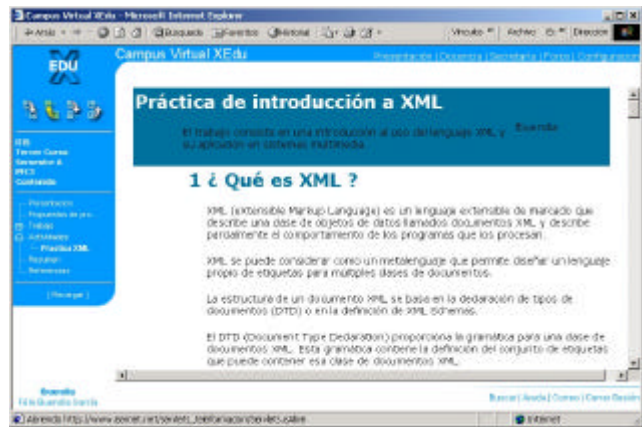


Figure 9.- Content publishing in Xedu.

The introduction of user information can be performed in two ways: batch or interactive. The first option is based on XML documents that store the user data and are uploaded to the server to be processed. The interactive option uses forms which are generated from the XML template in a dynamic way. An example of this procedure is shown in Figure 10. Every user has a login and a password that are checked using a PHPLib function. SSL security services are planned to be included. At the moment, there are three user roles: student, teacher and administrator. Students have different options such as current course material and assignments, administrative tasks (e.g. course enrollment) or communication tools (forums, e-mail, ...).

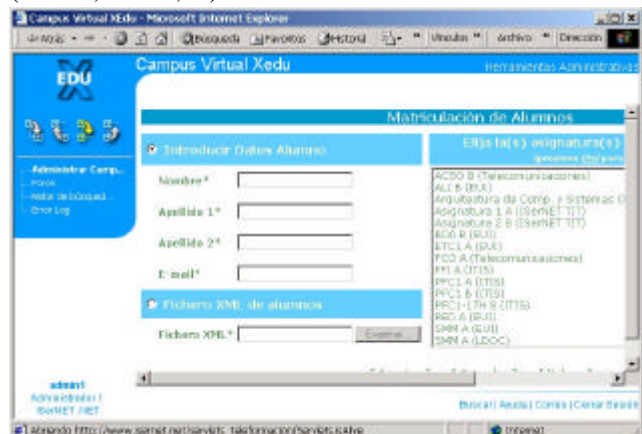


Figure 10.- Student information screen.

Teachers are concerned with the material insertion ("DBResource" servlet) and the setting of assignments. Figure 11 shows an example of introduction of teaching information. Administrators control the system running and they have options such as the configuration of communication tools and the system error management. Whenever a user, like a teacher or a student, accesses to the system, he is asked for resuming the "last" structure option he reached in a previous access. This information is stored by means of the "SessionTrace" servlet. Administrator users have special rights that allow them to supervise the system log or control the student access.

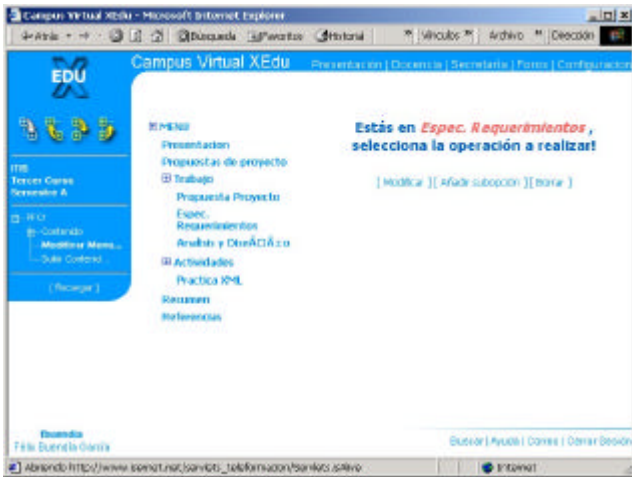


Figure 11.- Teaching information screen.

V. CONCLUSIONS

This paper shows the design and implementation of an example of LMS called XEDU. It takes advantage of standard Web technologies such as XML, Java and Javascript. The first one permits the strict separation between resource elaboration and its publishing in different formats. The use of Java and Javascript programming languages improves the XEDU portability. We are experimenting an XEDU prototype that is working on a Unix server. The system has registered a hundred of students and near twenty teachers, and the application performance is good. The main contributions that teachers recognize is the possibility to use references to external resources and the exchange of XML documents that implement resource and user organization.

Currently, we are checking its application in several computing subjects at the Informatics School (Polytechnic University of Valencia). Teachers who are responsible for introducing learning material are focused on its elaboration and they are not concerned about the presentation details. This feature eases their task. On the other hand, students have the possibility to deliver their assignments in a format that can be easily processed by the teacher.

VI. REFERENCES

- [1] Advanced Distributed Learning <http://www.adlnet.org/>
- [2] Wiest, S, Zell, A. Improving Web-Based Training Using an XML Content Base, Proceedings of ED-MEDIA 2001, Tampere, Finland, 2001, pp-2045-2050.
- [3] XML Extensible Markup Language, <http://www.w3.org/XML/>
- [4] Cap, C H. XML goes to School: Markup for Computer Assisted Learning and Teaching. European Journal of Open and Distance Learning, 2000 (<http://www1.nks.no/eurodl/eurodlen/index.html>).
- [5] Campus Virtual XEDU, <http://roger.disca.upv.es/cvv/principal.htm>
- [6] Apache XML Project, <http://xml.apache.org/>
- [7] UPV PID 11006. XML-based development of educational resources. <http://roger.disca.upv.es/IndiceV4/Principal.html>
- [8] Theiere, (2000) Thematic Harmonisation in Electrical and Information Engineering in Europe EAEEIE (2000). THEIERE: Thematic Harmonisation in Electrical and Information Engineering in Europe (EU reference 10063-CP-1-2000-1-PT-ERASMUS-ETNE). Proposal. <http://www.eaeeie.org/theiere/>
- [9] WBT Systems <http://www.wbtssystem.com/>

- [10] WebCT <http://www.webct.com/>
- [11] Learning Space <http://www.lotus.com/home.nsf/welcome/learnspace>
- [12] Duval, E. Standardized Metadata for Education: a Status Report, Proceedings of ED-MEDIA 2001, Tampere, Finland, 2001, pp-458-463.
- [13] Aviation Industry CBT (Computer-Based Training) Committee (AICC) <http://www.aicc.org/index.html>
- [14] IMS Global Learning Consortium, <http://www.imsproject.org/>
- [15] IEEE Learning Technology Standards Committee (LTSC) <http://ltsc.ieee.org/>
- [16] H. Davis, G. Hutchings, and W. Hall, "Microcosm: A Hypermedia Platform for the Delivery of Learning Materials," <http://www.bib.ecs.soton.ac.uk/data/1332/html/html>
- [17] H. Maurer, Th. Dietinger, "How Modern WWW Systems Support Teaching and Learning," Proc of the ICCE 97 (Ed. Z. Halim, T. Ottmann, Z. Razak), Kuching, Sarawak Malaysia, December, 1997, pp 37-51.
- [18] EML (Educational Modelling Language), <http://eml.ou.nl/introduction/>
- [19] Rodríguez-Artacho, M., Verdejo, M.F., Mayorga, J.I., Calero M.Y., Using a High-Level Language to Describe and Create Web-Based Learning Scenarios Frontiers In Education Conference HE '99 IEEE Computer Society San Juan, Puerto Rico, Nov 1999.
- [20] Buendía, F.; Diaz, P. Benlloch J.V.; A Framework for the Instructional Design of Multi-Structured Educational Applications, ED-MEDIA 2002, World Conference on Educational Multimedia, Hypermedia & Telecommunications, Denver, USA, 2002 (accepted as full paper)
- [21] Süß,C., Kammerl, R., Freitag, B.A Teachware Management Framework for Multiple Teaching Strategies. In: Proceedings of ED-MEDIA 2000, World Conference on Educational Multimedia, Hypermedia & Telecommunications, Montreal, Quebec, 2000
- [22] Buendía, F.; Benlloch, J.V; Gil, J.A. and Agustí, M. (2001) XEDU, a XML-based framework for developing didactic resources. . EAEEIE' 01 Annual Conference on Education in Electrical and Information Engineering. May. 2001 Nancy.
- [23] Vcard overview <http://www.imc.org/pdi/vcardoverview.html>
- [24] Buendía, F., Diaz, P., Sahuquillo, J., Benlloch, J., Gil, J.A., Agustí, M. XEDU, a Framework for Developing XML-based Didactic Resources. Proceedings of EuroMicro'01, Warsaw, Poland , 2001, pp. 427-434.